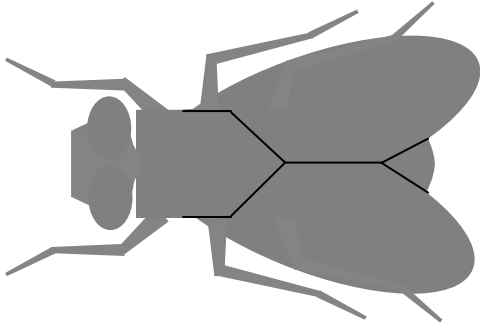


# Common Insect Orders Found at Wood Lake



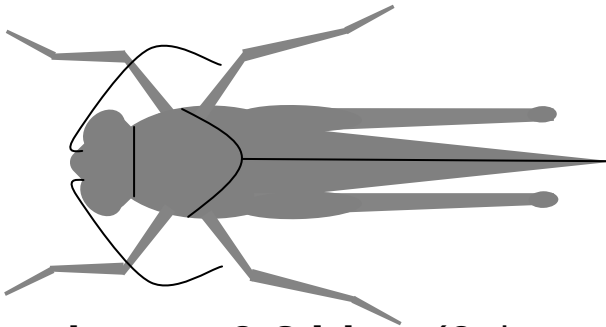
## Flies (Diptera)

Only two wings (1 pair), often have large compound eyes, sponging, piercing, or sucking mouthparts



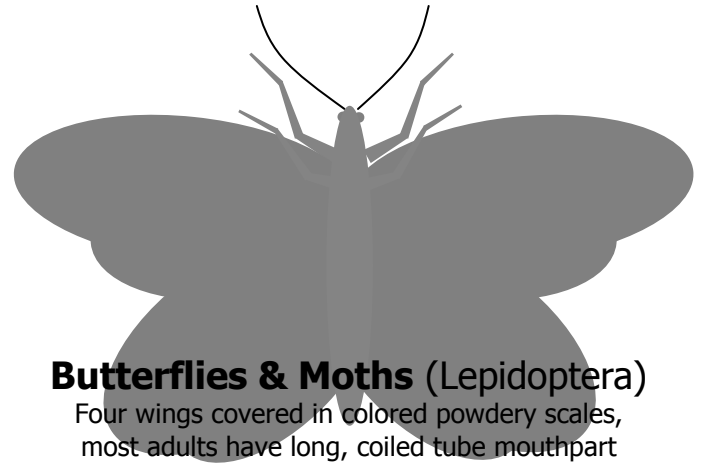
## Dragonflies & Damselflies (Odonata)

Long, slender body and wings, large compound eyes, short antennae, biting mouthparts



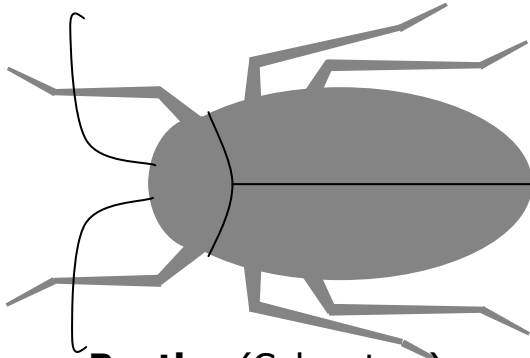
## Grasshoppers & Crickets (Orthoptera)

Long hind legs, shield-like covering over base of wings, flat-sided heads, large compound eyes, chewing mouthparts



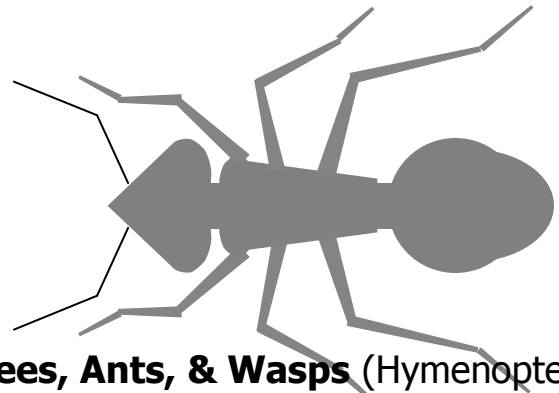
## Butterflies & Moths (Lepidoptera)

Four wings covered in colored powdery scales, most adults have long, coiled tube mouthpart



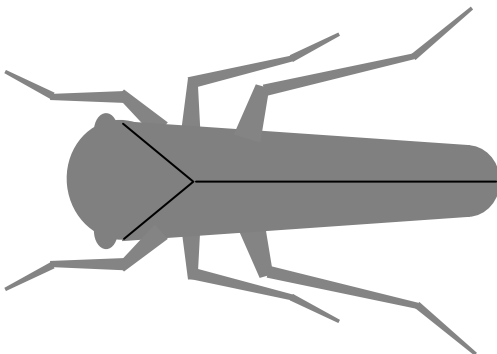
## Beetles (Coleoptera)

Wings fold in a straight line, flat against back, first pair of wings form hard shell, chewing mouthparts



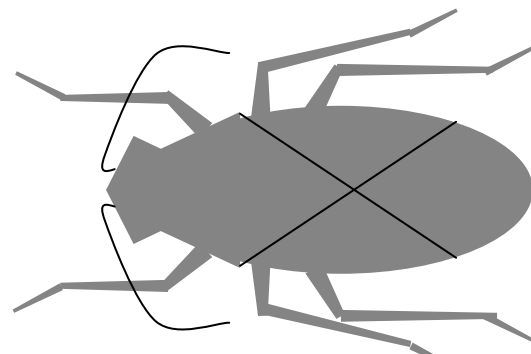
## Bees, Ants, & Wasps (Hymenoptera)

Zero or four wings, thin waist, chewing mouthparts, some also have tongue-like mouthpart, some have stingers



## Cicadas, Aphids, & Hoppers (Homoptera)

Wings fold over body like a tent, often extend past abdomen, sucking mouthparts beneath head



## True Bugs (Hemiptera)

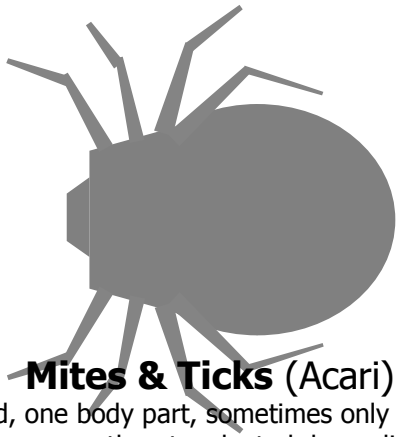
Triangular shield on thorax, wings often form an x pattern, wings half leathery, half clear, sucking mouthparts

# Common Non-Insect Arthropods Found at Wood Lake

## Arachnids

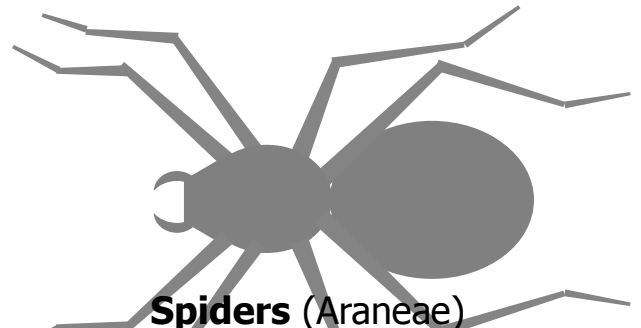
(Class Arachnida)

Usually four pairs of legs, no antennae or wings



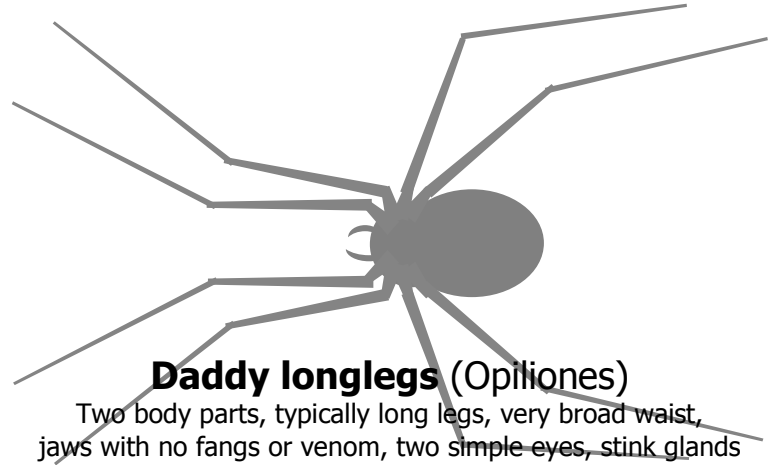
## Mites & Ticks (Acari)

Small-sized, one body part, sometimes only one to three pairs of legs, mouthparts adapted depending on food



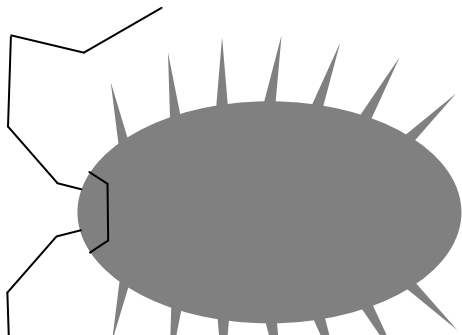
## Spiders (Araneae)

Two body parts, thin waist, up to eight simple eyes, piercing jaws with fangs, most have silk spinnerettes & poison glands



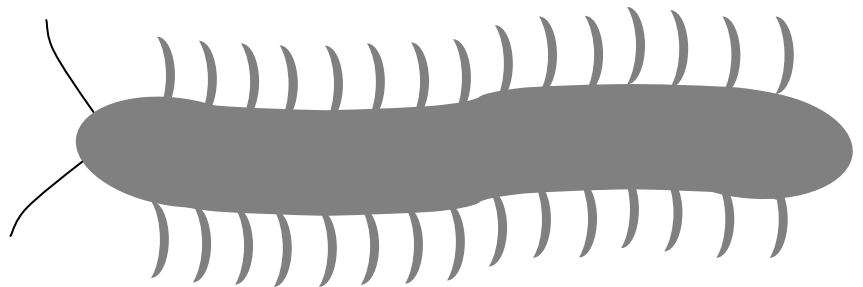
## Daddy longlegs (Opiliones)

Two body parts, typically long legs, very broad waist, jaws with no fangs or venom, two simple eyes, stink glands



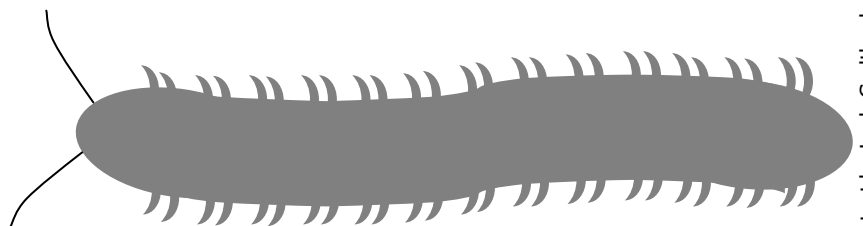
## Sowbugs and Pillbugs (Isopoda)

7 pairs of legs, 4 antennae, some curl into a ball when threatened



## Centipedes (class Chilopoda)

One pair of legs on each body segment, 2 antennae, fangs, poison glands, typically fast-moving, bite when threatened



## Millipedes (class Diplopoda)

Two pairs of legs on each body ring, 2 antennae, stink glands, typically slow-moving, many curl into a ball when threatened